

Welcome!



Beth Israel Lahey Health 
Beth Israel Deaconess Medical Center

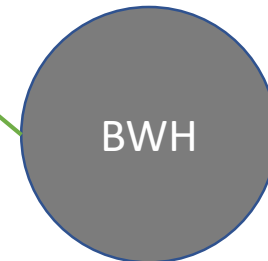
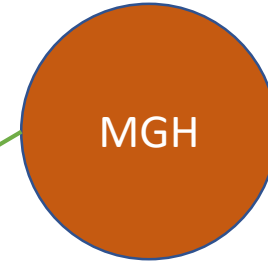
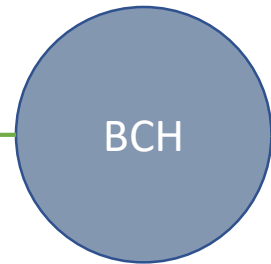


BRIGHAM HEALTH



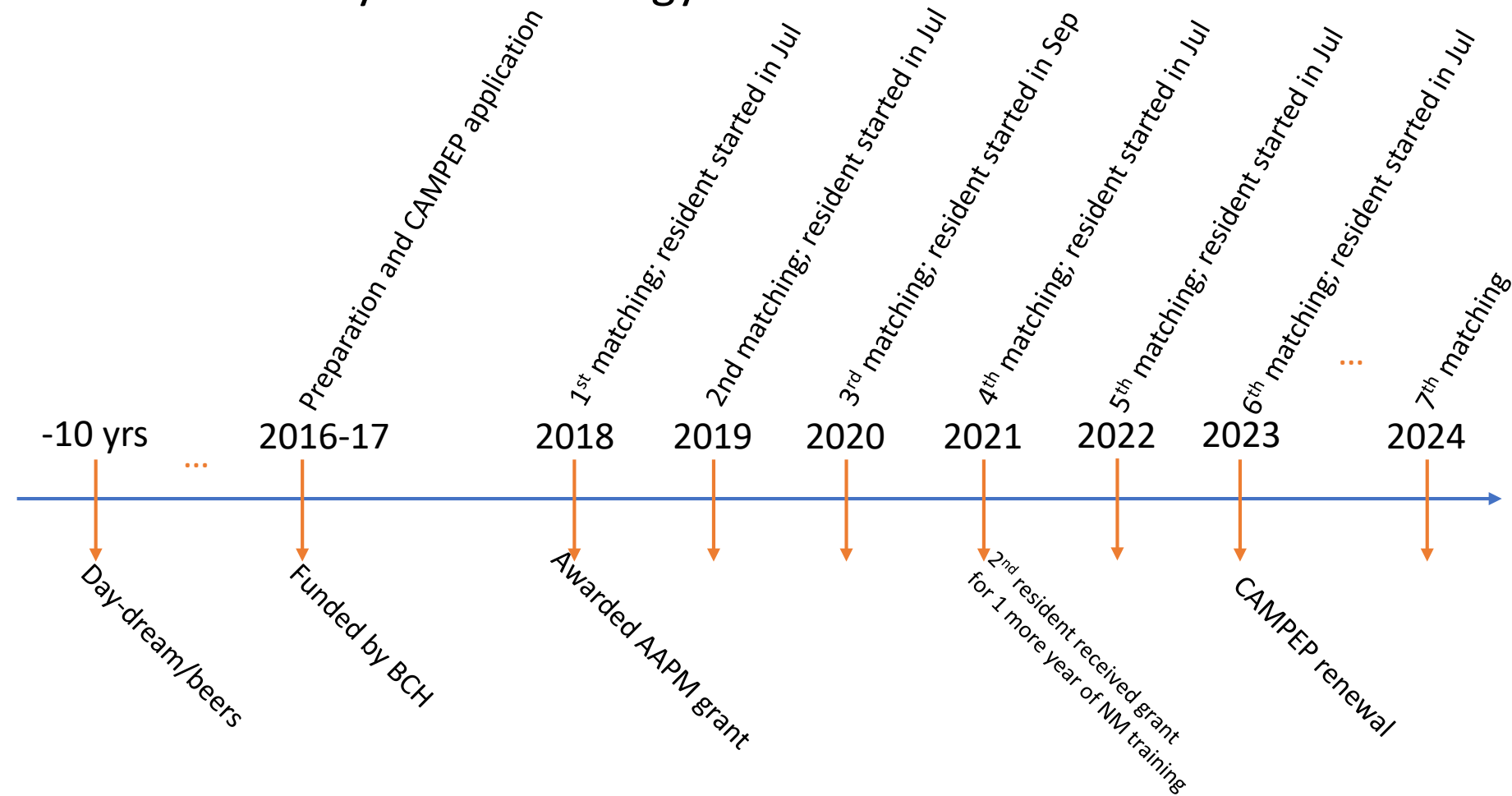
Joint Dx/NM MP Residency Program at BCH

- Based at BCH, and with rotations at BIDMC, BWH, and MGH



Joint Dx/NM MP Residency Program at BCH

- Started as a shared dream about 10 years ago
- Funded by BCH Radiology Foundation



Joint Dx/NM MP Residency Program at BCH

- Medical physics faculty from 4 hospitals, joined by enthusiasm and love



Boston Children's Hospital

Rotations:

- *Ultrasound*
- *Radiation safety*
- *Fluoroscopy, Advanced IR*
- *Advanced MR*
- *CT, Advanced CT*
- *Informatics, Advanced Informatics*



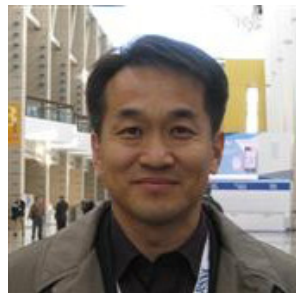
Fred Fahey



Da Zhang



Bob Mulkern



Don-Soo Kim



Andrew Najjar



Massachusetts General Hospital (MGH)

Rotations:

- *Nuclear Medicine*
- *Advanced NM*
- *Advanced CT (Dosimetry and IQ)*



Hamid Sabet



Bob Liu



Kai Yang



Xinhua Li



Beth Israel Deaconess Medical Center (BIDMC)

Rotations:

- *Mammography and Radiography*
- *CT*
- *Hybrid Imaging / Theronostics*



Chris MacLellan



Matt Palmer



Edmond Olguin



Brigham and Women's Hospital (BWH)

Rotations:

- *Nuclear Medicine*
- *Advanced NM*
- *MRI*



Georgeta Mihai

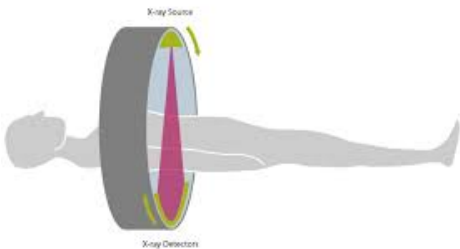
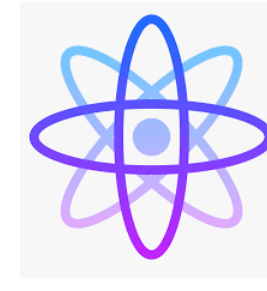
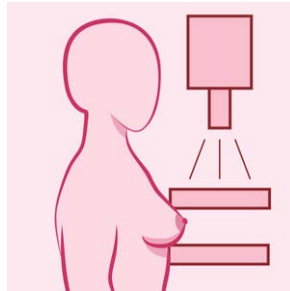


Benjamin Auer



Dx MP Track

- Dx Imaging Program, 8 rotations (Rad Safety, Radiography/Mammo, Fluoro/IR, CT, NM, MR, Informatics, US)
 - Last 8 months tailored to interest of resident (two advanced rotations)
 - Eligible for ABR Dx Medical Physics board upon completion
- Advanced CT
 - Advanced Breast Imaging
 - Advanced MRI
 - Advanced Informatics
 - Advanced Reconstructions
 - Advanced FL/IR
 - Hybrid Imaging



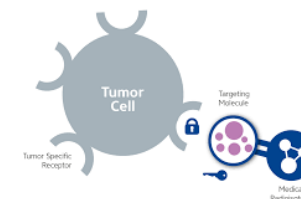
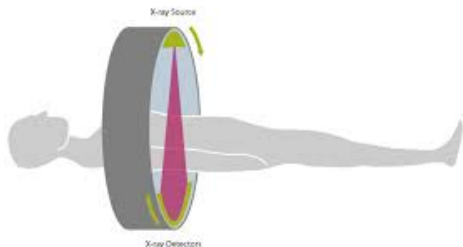
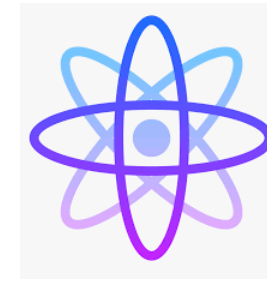
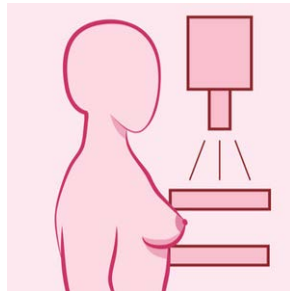
ULTRASOUND

NM MP Track

- NM Imaging Program, 8 rotations (Rad Safety, Radiography/Mammo, Fluoro/IR, NM, CT, MR, Informatics, Radionuclide Therapy)
- 2nd year dedicated to NM with in-depth training
- Eligible for ABR Nuclear Medical Physics board upon completion

In-depth training in

- Radiopharmacy
- NM Non-Imaging Equipment
- NM Imaging Equipment
- Radionuclide Therapy
- Clinical Studies
- QC tasks performed solo
- Advanced topics in Kinetic Modeling
- Advanced topics in Tomographic Reconstruction
- Shielding
- Hybrid imaging



Graduates and Trainees from Our Residency Program

- Christiane Burton, PhD, DABR
 - Diagnostic Medical Physicist, Northwestern University
- Reyhaneh Nosrati, PhD, DABR
 - Senior Machine Learning Data Scientist, Johnson & Johnson
- Andrew LaBella, PhD
 - Medical imaging physicist, SUNY Stonybrook
- Renxin Chu, PhD
 - Senior resident
- Sang Hoon Chong, PhD
 - Junior resident

CRL

Computational Radiology Laboratory at Boston
Children's Hospital



Affiliated/Supporting Facilities



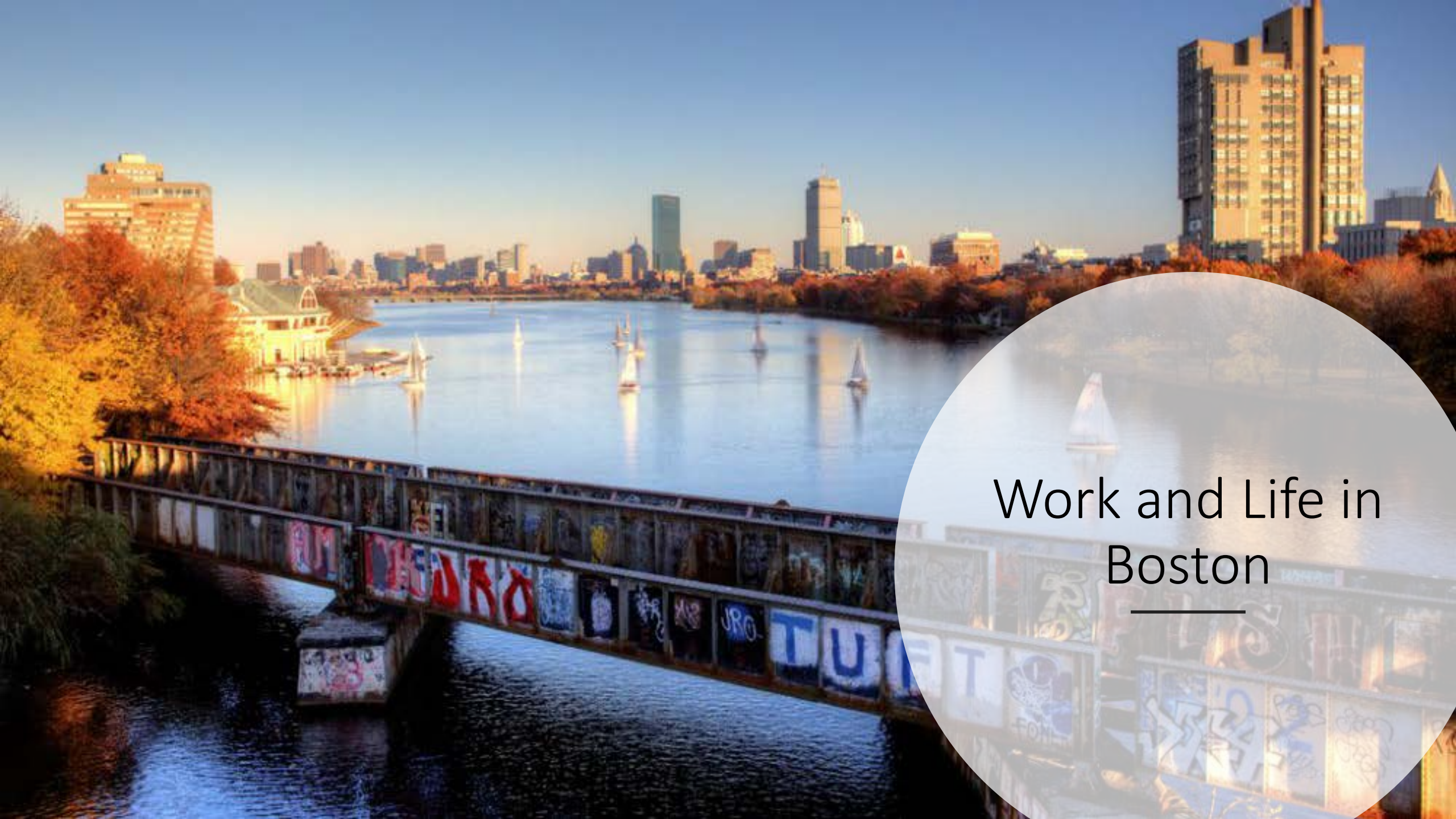
Gordon
Center for
Medical
Imaging



WELCOME TO THE GORDON CENTER

Online Resources about Our Program

- Virtual tour about graduate medical training at Boston Children's Hospital: <https://youtu.be/BOJU31vOROG>
 - Webpage of our program: <https://on.bchil.org/38rWVTK>
- The Gordon Center for Medical Imaging at MGH, where our Nuclear Medicine and Advanced Nuclear Medicine rotations are hosted
 - Webpage: <https://gordon.mgh.harvard.edu>
- BCH SIMPeds3D Printing lab: <https://youtu.be/QZ4KLzhL6tw>
- BCH Computational Radiology Laboratory:
 - <http://www.crl.med.harvard.edu>
 - <https://www.childrenshospital.org/research/labs/computational-radiology-laboratory>

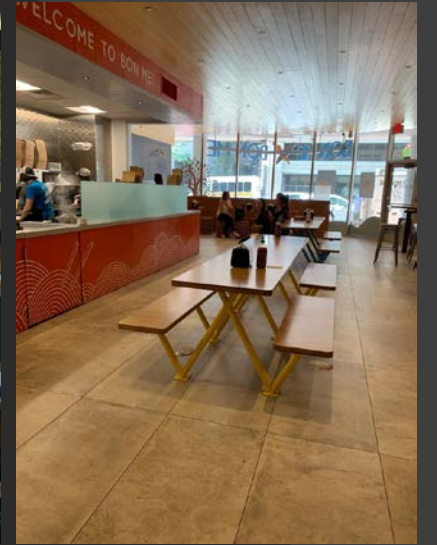
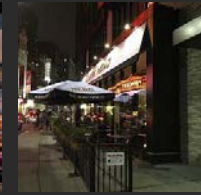


Work and Life in Boston



Residents' offices at Longwood Center

Cafés around the Longwood Area



Walker's Paradise ?

Fenway - Kenmore - Audubon Circle - Longwood, Boston, 02115

Commute to **Downtown Boston**

🚗 9 min 🚌 21 min 🚲 14 min 🚶 46 min View Routes

♡ Favorite 📖 Map 🔍 Nearby Apartments

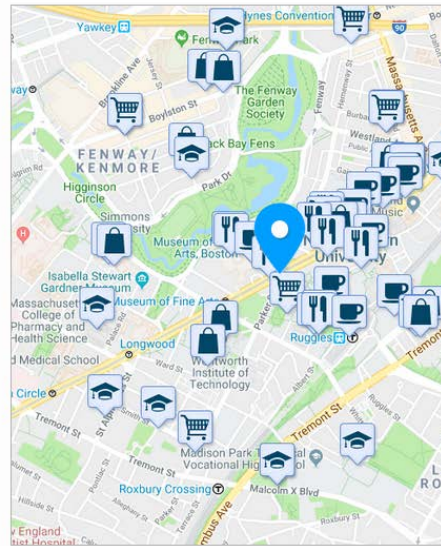
Looking for a home for sale in Boston? 🔗

Walk Score 95
Daily errands do not require a car.

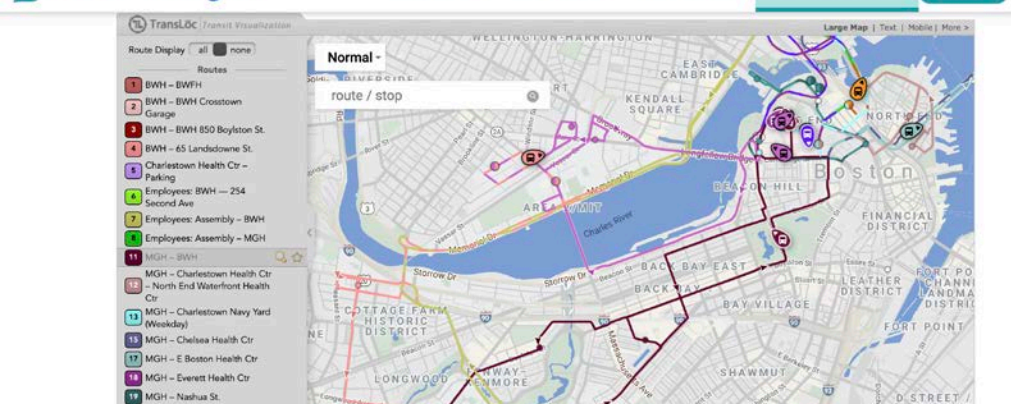
Transit Score 96
World-class public transportation.

Bike Score 90
Daily errands can be accomplished on a bike.

About your score



Mass General Brigham Who We Are How We Lead Find & Get Care Patient Information COVID-19



Commuting and Transportation

- “Walker/Rider/Biker’s Paradise”
- Free Shuttle between MGH and Longwood area
- Parking available for residents at discounted price



Free (private😊) shuttle bus between BWH and MGH

Rentals near Longwood Medical Area

Example places to rent

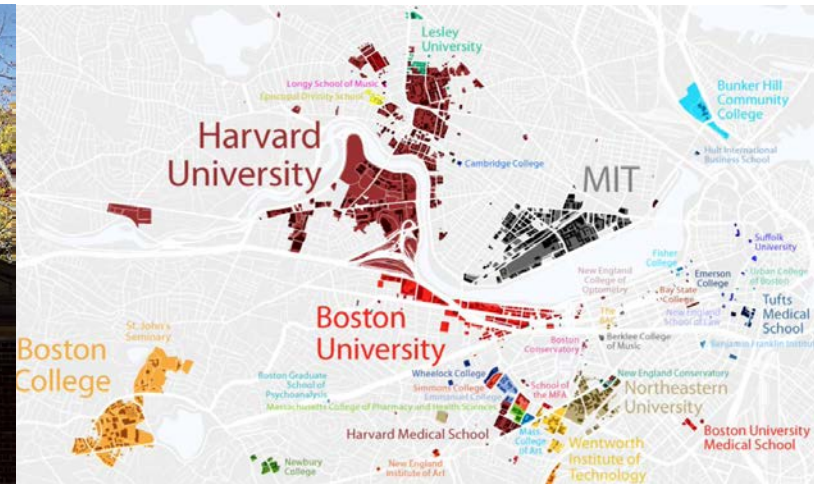
- Fenway / Longwood
- Brigham Circle
- Jamaica Plain
- Along the Green Lines (subway B, C, D, E)



Boston is a city for students and trainees

Some colleges and medical schools

- Harvard University/Medical School
- Boston University/Medical School
- Tufts University/Medical School
- Northeastern University
- MIT
- Suffolk University
- UMass Boston
- Boston College
- Simmons College
- Emmanuel College
- Emerson College
- Mass College of Pharmacy and Health Science
- Mass College of Art
- Berklee College of Music
- New England Conservatory of Music



Boston is a gorgeous city with many attractions!



HOME OF THE BOSTON RED SOX™



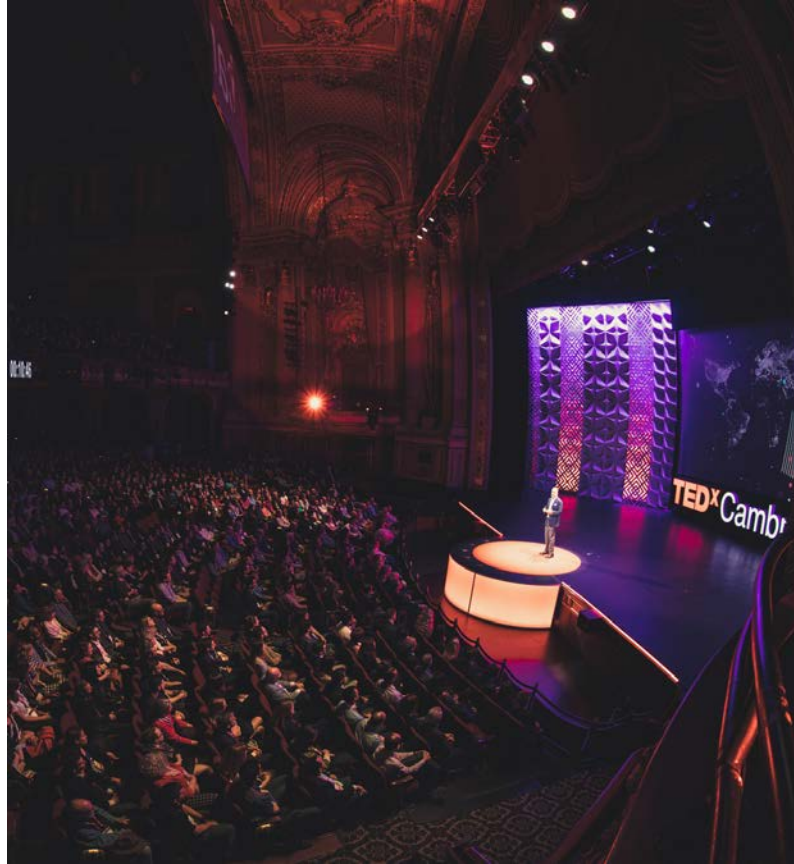
Attractions: Sports

- Red Sox
- Patriots
- Celtics
- Bruins



Attractions: Art and Music

- Museum of Fine Arts
- Gardner Museum
- Boston Symphony Orchestra
- Boston Pops Orchestra



Boston is also a dynamic city full of professional events!
