

# Welcome!



Beth Israel Lahey Health   
Beth Israel Deaconess Medical Center

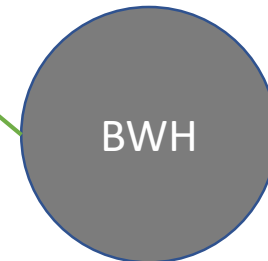
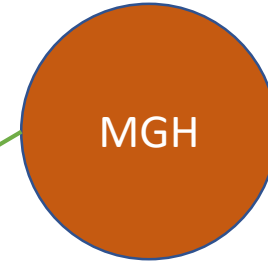
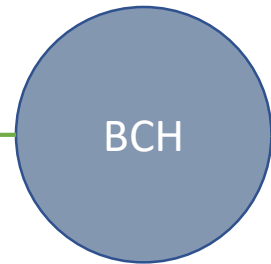


**BRIGHAM HEALTH**



# Joint Dx/NM MP Residency Program at BCH

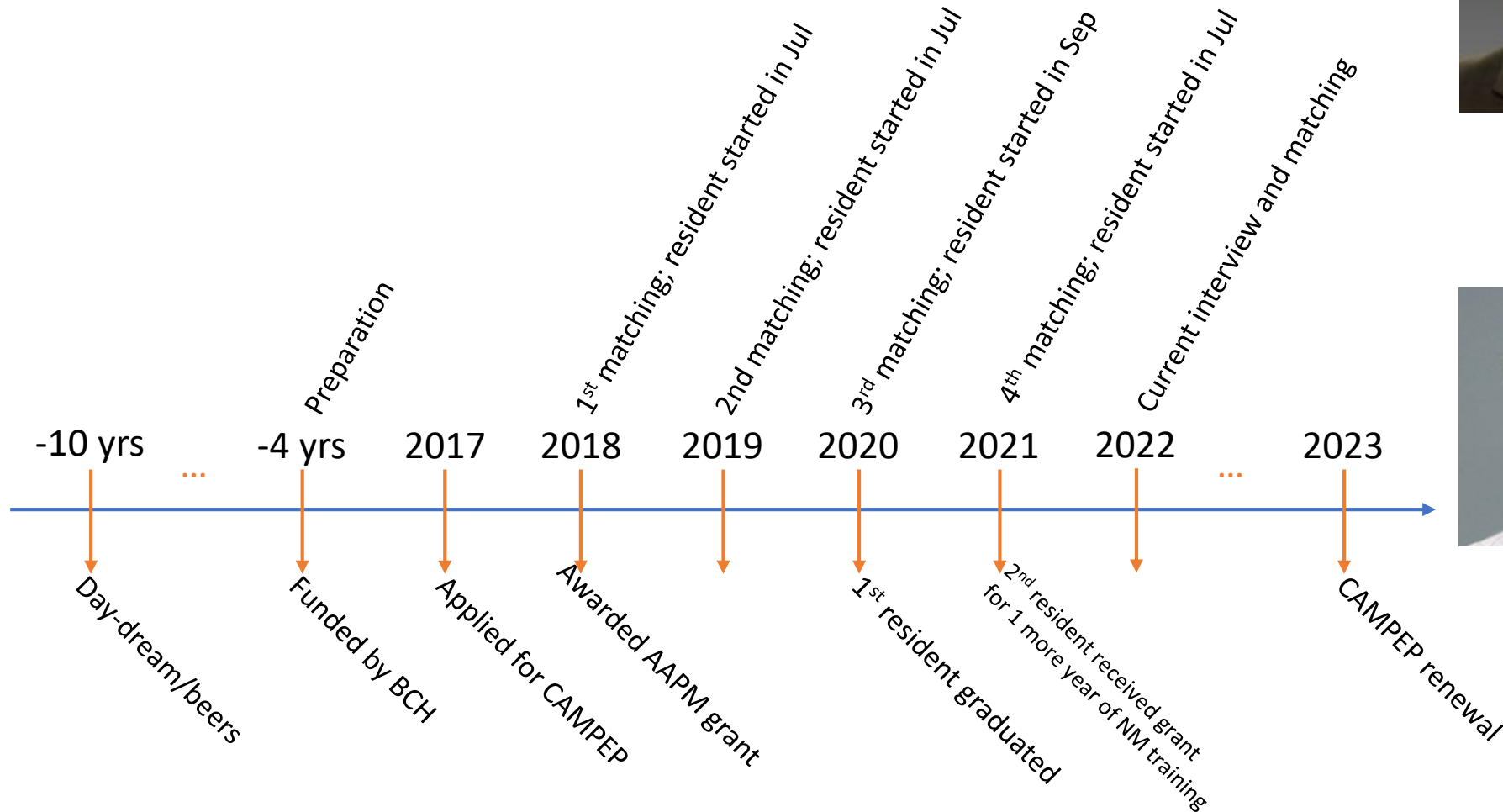
- Based at BCH, and with rotations at BIDMC, BWH, and MGH





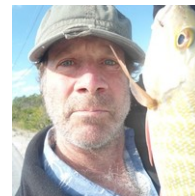
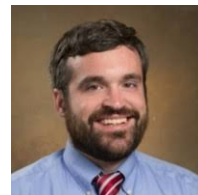
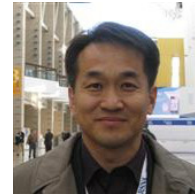
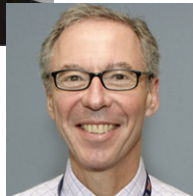
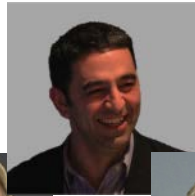
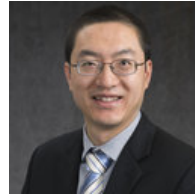
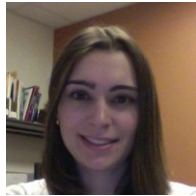
# Joint Dx/NM MP Residency Program at BCH

- Started as a shared dream about 10 years ago
- Funded by BCH Radiology Foundation 4 years ago



# Joint Dx/NM MP Residency Program at BCH

- Founders and faculty, joined by enthusiasm and love



# Boston Children's Hospital

## Rotations:

- *Ultrasound*
- *Radiation safety*
- *Fluoroscopy*
- *Advanced MR*
- *CT, Advanced CT (DECT)*
- *Informatics, Advanced Informatics*



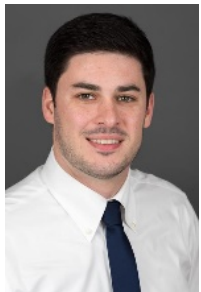
Fred Fahey



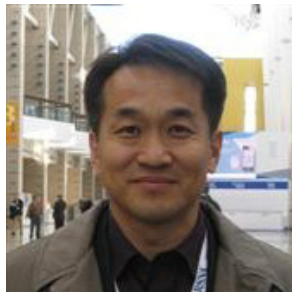
Da Zhang



Bob Mulkern



Ryan Toolin



Don-Soo Kim





# Massachusetts General Hospital (MGH)

## Rotations:

- *Nuclear Medicine*
- *Advanced NM*
- *Advanced CT (Dosimetry and IQ)*



Georges El Fakhri



Kira Grogg



Bob Liu



Kai Yang



Xinhua Li





# Beth Israel Deaconess Medical Center (BIDMC)

Rotations:

- *Mammography and Radiography*
- *CT*
- *Hybrid Imaging / Theronostics*



Chris MacLellan



Matt Palmer



Edmond Olguin





# Brigham and Women's Hospital (BWH)

Rotations:

- *MRI*



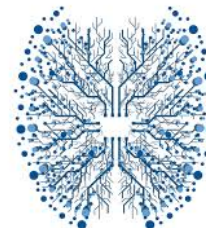
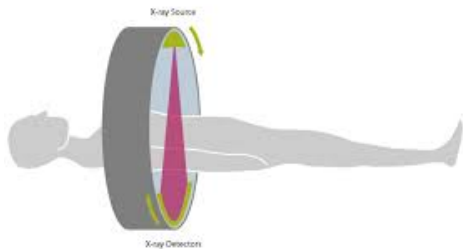
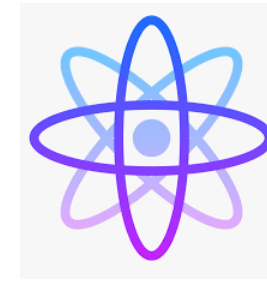
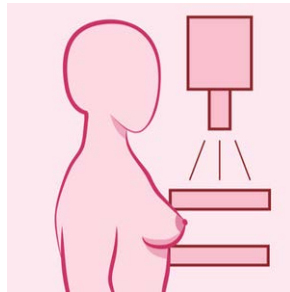
Georgeta Mihai





# Dx MP Track

- Dx Imaging Program, 8 rotations (Rad Safety, Radiography/Mammo, Fluoro/IR, NM, CT, MR, Informatics, US)
  - Last 8 months tailored to interest of resident (two advanced rotations)
  - Eligible for ABR Dx Medical Physics board upon completion
- Advanced CT
  - Advanced Breast Imaging
  - Advanced MRI
  - Advanced Informatics
  - Advanced Reconstructions
  - Hybrid Imaging



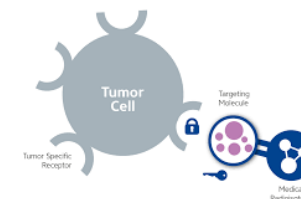
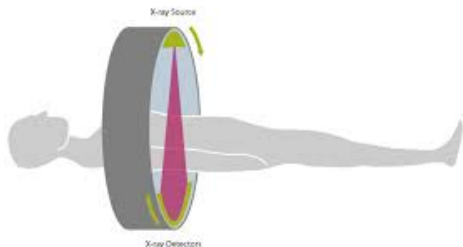
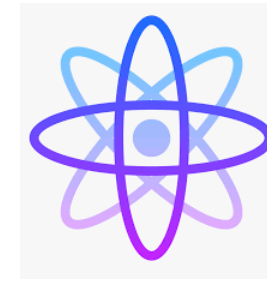
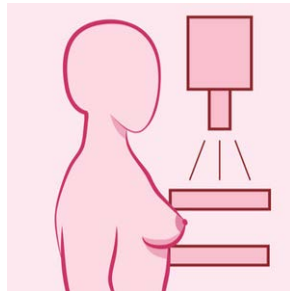
ULTRASOUND

# NM MP Track

- NM Imaging Program, 8 rotations (Rad Safety, Radiography/Mammo, Fluoro/IR, NM, CT, MR, Informatics, Radionuclide Therapy)
- 2<sup>nd</sup> year dedicated to NM with in-depth training
- Eligible for ABR Nuclear Medical Physics board upon completion

In-depth training in

- Radiopharmacy
- NM Non-Imaging Equipment
- NM Imaging Equipment
- Radionuclide Therapy
- Clinical Studies
- QC tasks performed solo
- Advanced topics in Kinetic Modeling
- Advanced topics in Tomographic Reconstruction
- Shielding
- Hybrid imaging



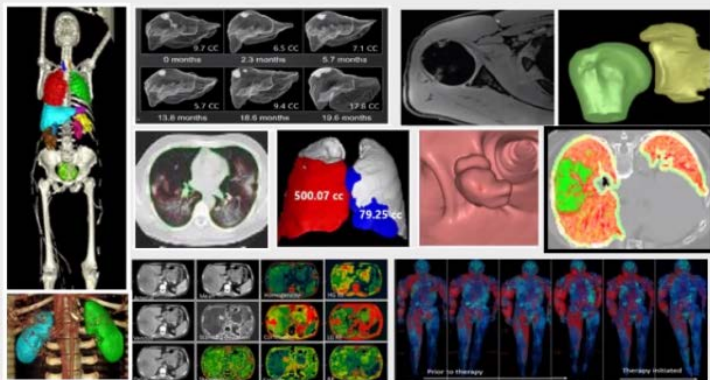


# CRL

Computational Radiology Laboratory at Boston  
Children's Hospital



 **3DQI: 3D Quantitative Imaging Laboratory**  
Quantitative Imaging, Radiomics and Machine Learning for Advanced Medical Image Analysis 



## Affiliated/Supporting Facilities

 **Gordon  
Center for  
Medical  
Imaging**

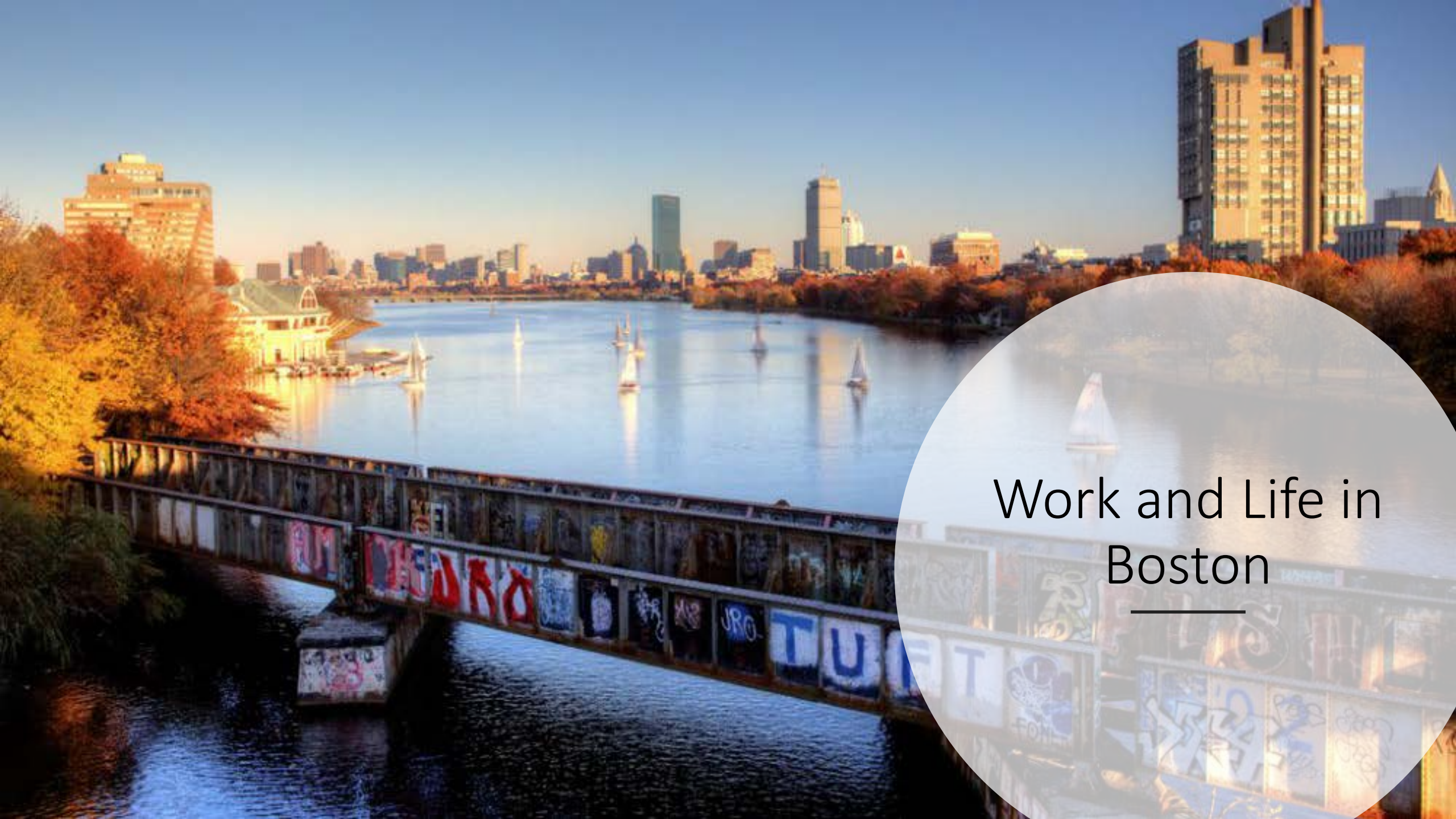


WELCOME TO THE GORDON CENTER

# Online Resources about Our Program

- Virtual tour about graduate medical training at Boston Children's Hospital: <https://youtu.be/BOJU31vOROG>
- Webpage of our program: <https://on.bchil.org/38rWVTK>
- The Gordon Center for Medical Imaging at MGH, where our Nuclear Medicine and Advanced Nuclear Medicine rotations are hosted
  - Webpage: <https://gordon.mgh.harvard.edu/gc>
  - Virtual tour to the Gordon Center: <https://www.youtube.com/watch?v=Ns5APemHU08>
- BCH SIMPeds3D Printing lab: <https://youtu.be/QZ4KLzhL6tw>
- BCH Computational Radiology Laboratory:
  - <http://www.crl.med.harvard.edu>
  - <https://www.childrenshospital.org/research/labs/computational-radiology-laboratory>
- The 3D Quantitative Imaging Lab at MGH: [https://3dqi.github.io/3dqi\\_website](https://3dqi.github.io/3dqi_website)





# Work and Life in Boston

---



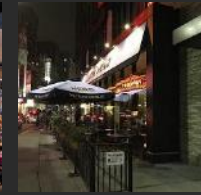


# Residents' offices at Longwood Center





# Cafés around the Longwood Area





# Walker's Paradise ?

Fenway - Kenmore - Audubon Circle - Longwood, Boston, 02115

Commute to **Downtown Boston**

🚗 9 min 🚌 21 min 🚲 14 min 🚶 46 min View Routes

♡ Favorite 📖 Map 🔍 Nearby Apartments

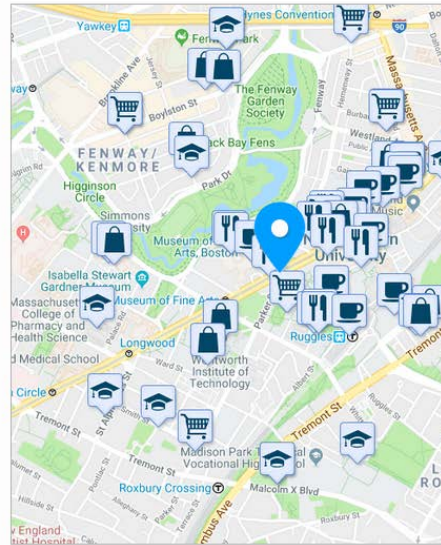
Looking for a home for sale in Boston? 🔗

**Walk Score 95**  
Daily errands do not require a car.

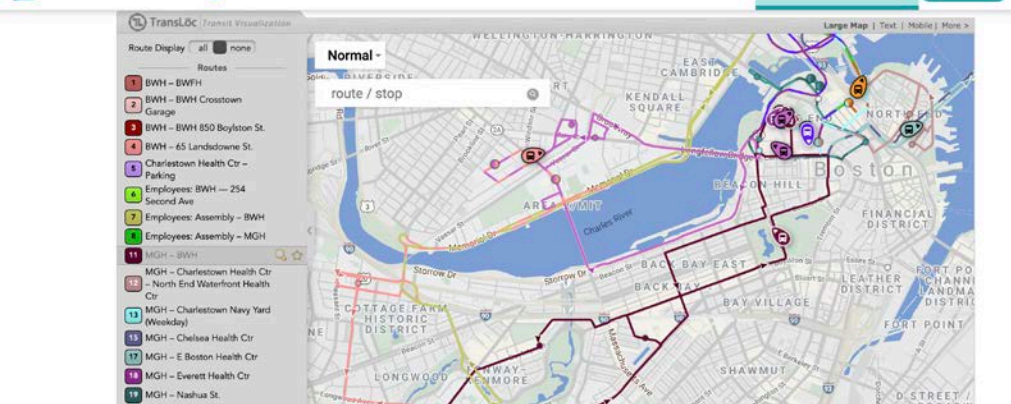
**Transit Score 96**  
World-class public transportation.

**Bike Score 90**  
Daily errands can be accomplished on a bike.

About your score



**Mass General Brigham** Who We Are How We Lead Find & Get Care Patient Information COVID-19



# Commuting and Transportation

- “Walker/Rider/Biker’s Paradise”
- Free Shuttle between MGH and Longwood area
- Parking available for residents at discounted price



Free (private😊) shuttle bus between BWH and MGH



# Rentals near Longwood Medical Area

## Example places to rent

- Fenway / Longwood
- Brigham Circle
- Jamaica Plain
- Along the Green Lines (subway)

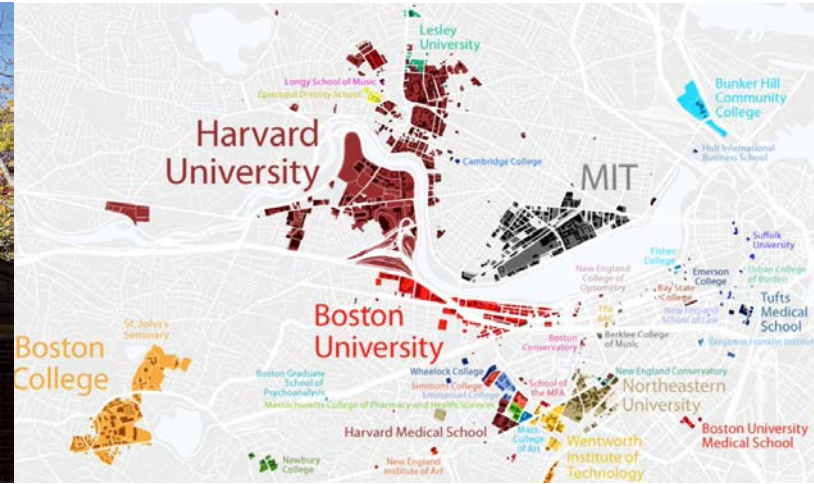




# Boston is a city for students and trainees

## Some colleges and medical schools

- Harvard University/Medical School
- Boston University/Medical School
- Tufts University/Medical School
- Northeastern University
- MIT
- Suffolk University
- UMass Boston
- Boston College
- Simmons College
- Emmanuel College
- Emerson College
- Mass College of Pharmacy and Health Science
- Mass College of Art
- Berklee College of Music
- New England Conservatory of Music





# Boston is a gorgeous city with many attractions!





HOME OF THE BOSTON RED SOX™



## Attractions: Sports

- Red Sox
- Patriots
- Celtics
- Bruins

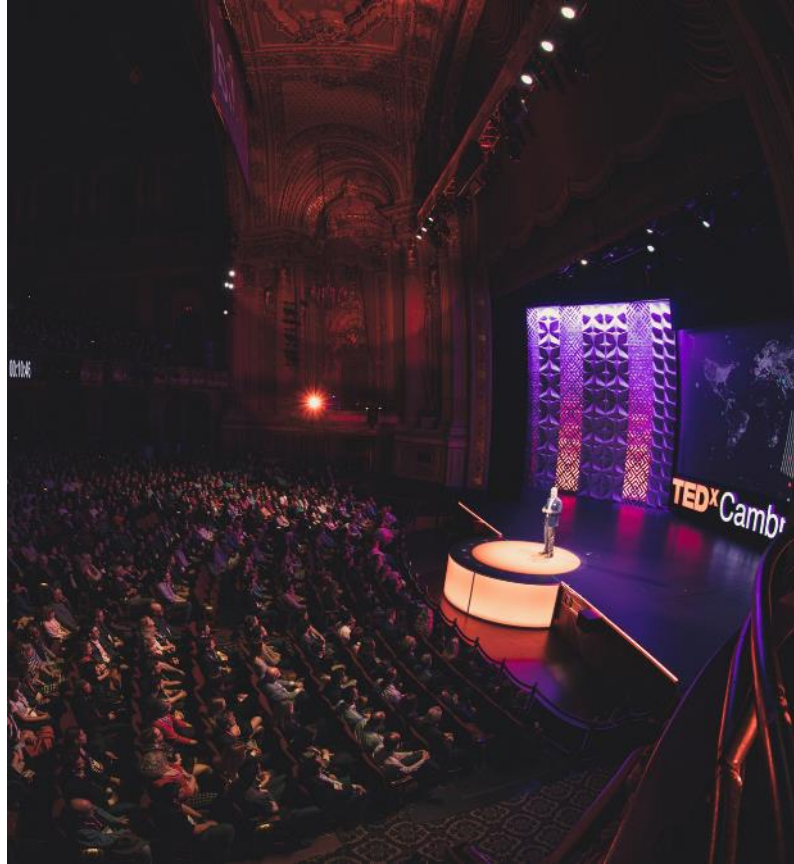




## Attractions: Art and Music

- Museum of Fine Arts
- Gardner Museum
- Boston Symphony Orchestra
- Boston Pops Orchestra





Boston is also a dynamic city full of professional events!

---